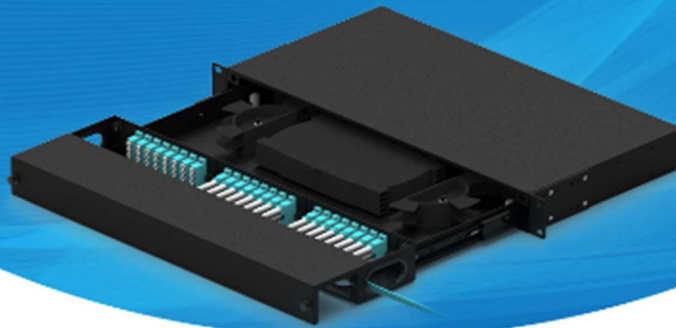




Fusion Type Rack Mounted Patch Panels

Type JFOPP-RMP10-B-002/003



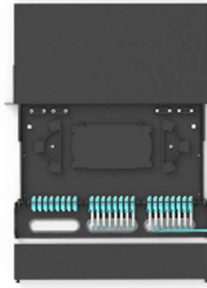
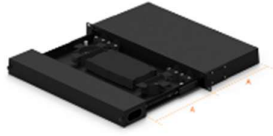
Description

JFOPP-RMP10-B-002/003 sliding rail drawer design patch panel, with functions of fiber fusion splicing, storage and distributing, mainly used for the termination and distribution of central trunk cables in optical fiber communication systems, which can conveniently realize the connection, distribution and scheduling of the optical fiber line. Suitable for small and medium wiring systems such as FTTZ, FTTB.

Features

01 Sliding rail design

3-section sliding rails adopted in the patch panel to achieve smoothly sliding out and not being blocked by the outer casing after being pulled out.



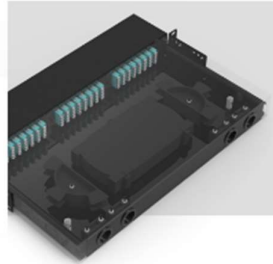
04 Convenient distribution

Classic layout design, Jiafu has continuously improved with the feedback of the market for decades, ensuring scientific design and convenient use.



02 Quick assembly and disassembly

Each single sliding tray can be easily disassembled by pressing its locking clip, and can be easily assembled by simply pushing it back in the opposite direction.



05 Cable entry mode

Four 21mm cable inlets at the back of the patch panel, dust apron can be cut according to usage.

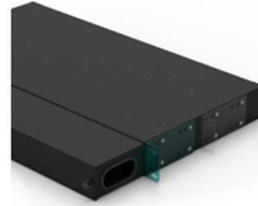
03 Modular Panel

The pull tray has three adapter panel slots for quick replacement and wiring.



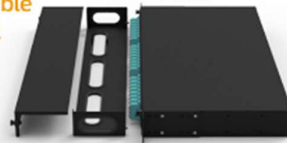
06 Adjustable mounting ears

The both mounting ears are adjustable by using different fixing hole, to meet the actual wiring requirements.



07 Optional extra cable organizing panel

Extra cable organizing panel is optional for front cable management and labelling.



Other Performance



Formed with high quality cold rolled steel sheet



Electrostatic spraying, even leveling



Meet ROHS certification standards



Comply with CE certification standards



Comply with FCC certification standards



Passed ISO9001:2015



Compliance with IEC certification standards